

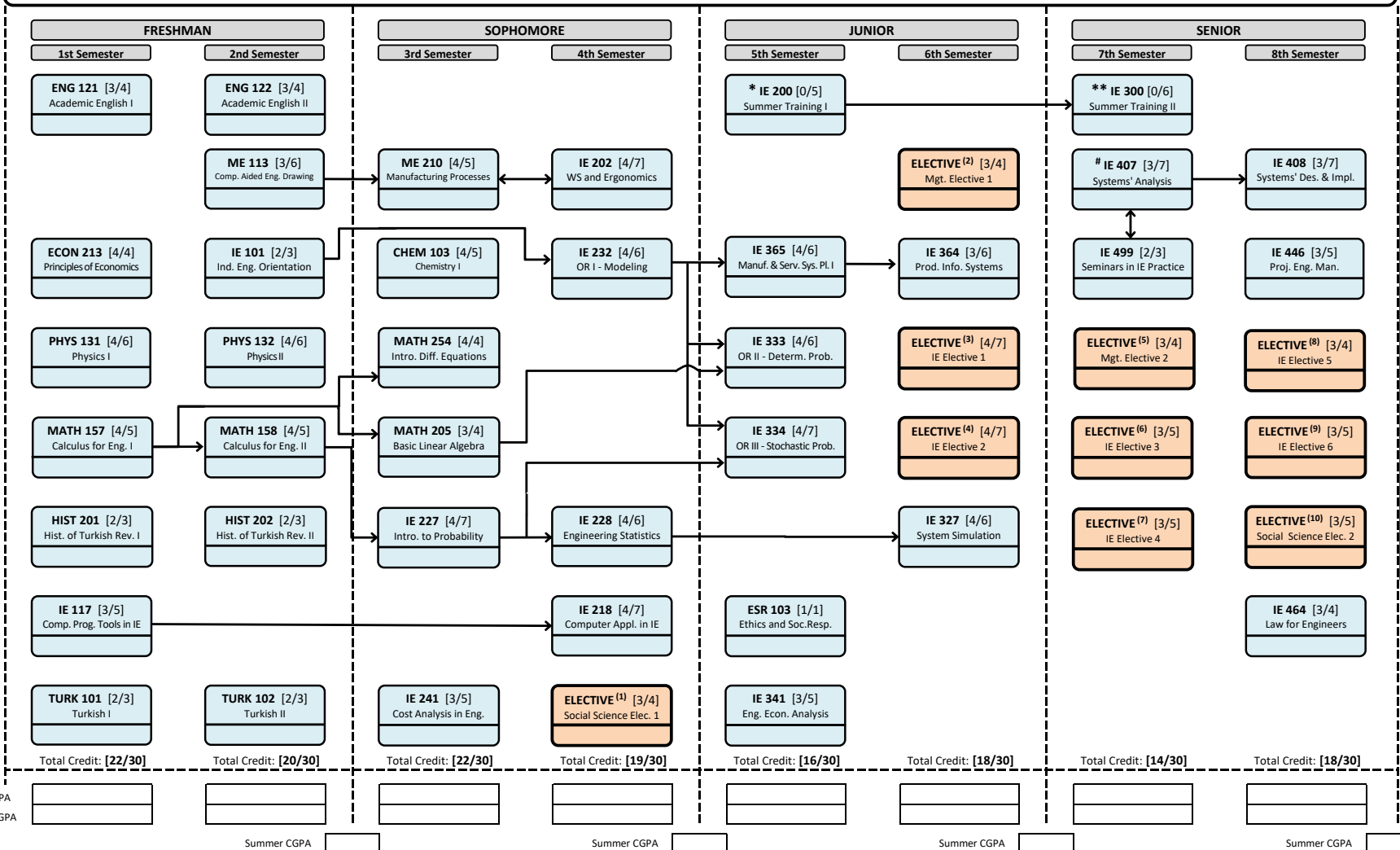
Student ID:

Name:

(Last update: 12.07.2024)

### Industrial Engineering Undergraduate Curriculum Prerequisite Diagram

(For students admitted for the 2024-2025 academic year or after)



- #### ELECTIVE COURSES
- (1) Social Sciences Elective  
(Any course from the Social Sciences Electives list approved by the Department)
  - (2) Management Elective  
(Any course from the courses of MAN 404 and MAN 431)
  - (3) IE Elective  
(Any course from the pool of IE 302, IE326, IE366)
  - (4) IE Elective  
(Any course from the pool of IE 302, IE326, IE366)
  - (5) Management Elective  
(Any course from the courses of MAN 401 and MAN 433)
  - (6) IE Elective
  - (7) IE Elective
  - (8) IE Elective
  - (9) IE Elective
  - (10) Social Sciences Elective  
(Any course from the Social Sciences Electives list approved by the Department)

**Special Prerequisites**

(\*) IE 200: ME 210 **and** (IE 202 or IE 232)  
 (\*\*) IE 300: IE 200 **and** (at least four of {IE 302, IE 326, IE 327, IE 333, IE 334, IE 341, IE 364, IE 365, IE 366})  
 (#) IE 407: (IE 218 or IE 364) **and** (IE 333 or IE 334) **and** (at least three of {IE 302, IE 326, IE 327, IE 341, IE 365, IE 366})

[C/D] : Course credit (C) / ECTS Credit (D)

